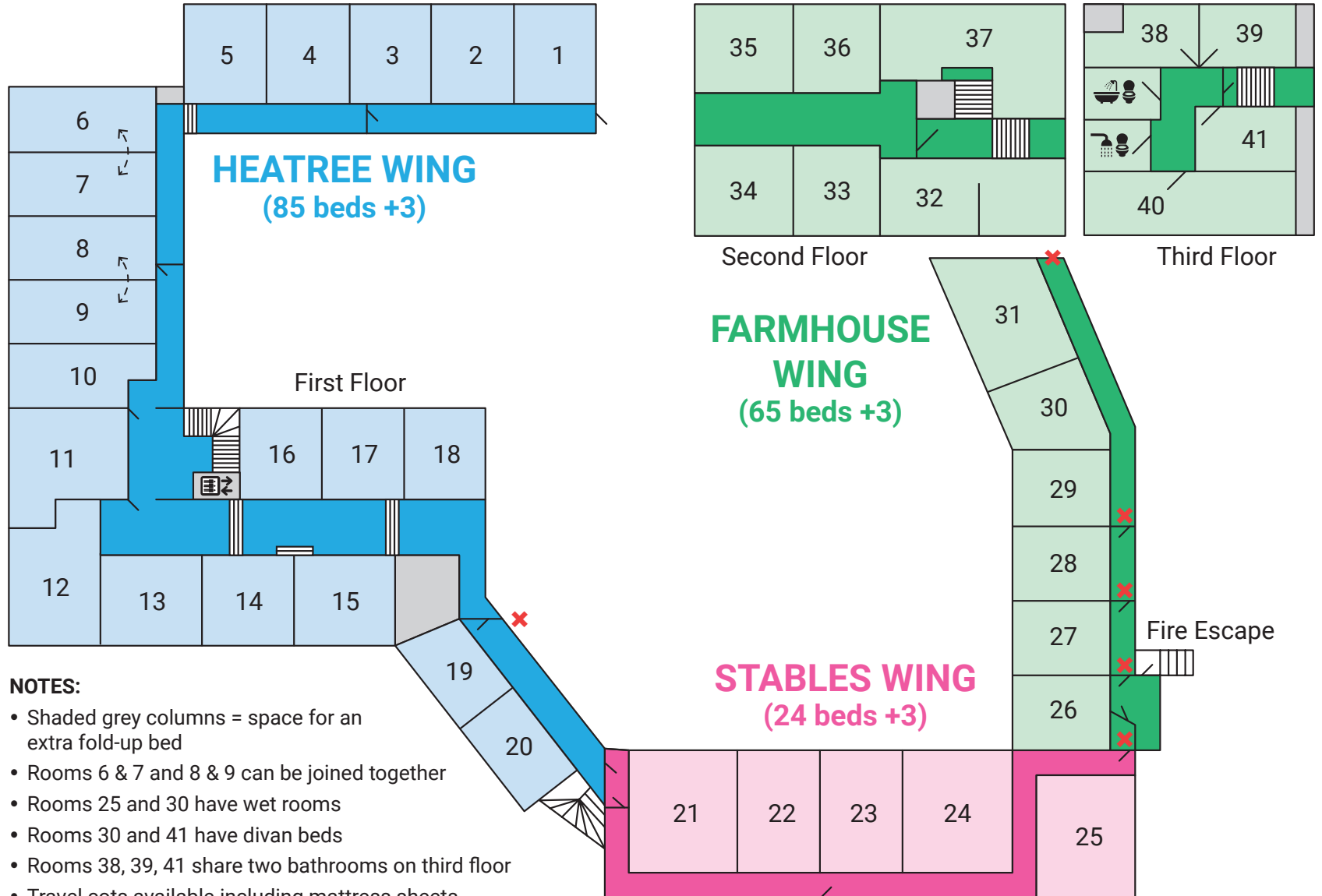


1	4	2 bunks
2	4	2 bunks
3	4	2 bunks
4	4	2 bunks
5	4	2 bunks
6	4	2 bunks
7	4	2 bunks
8	4	2 bunks
9	4	2 bunks
10	4	2 bunks
11	8	4 bunks
12	6	3 bunks
13	5	2 bunks, 1 single
14	4	2 bunks
15	5	2 bunks, 1 single
16	3	1 bunk, 1 single
17	3	1 bunk, 1 single
18	4	2 bunks
19	4	2 bunks
20	3	1 bunk, 1 single
21	6 (7)	2 bunks + 1 bunk lower double/top single
22	4	2 bunks
23	4	2 bunks
24	6 (7)	2 bunks + 1 bunk lower double/top single
25	4	2 bunks
26	4	2 bunks
27	4	2 bunks
28	4	2 bunks
29	4	2 bunks
30	3	1 bunk, 1 single
31	4	2 bunks (steps to access)
32	6	3 bunks
33	3	1 bunk, 1 single
34	4	2 bunks
35	4	2 bunks
36	4	2 bunks
37	8	3 bunks, 2 singles
38	2 (3)	1 double, 1 single
39	3	1 bunk, 1 single
40	6	3 bunks
41	2	2 singles

# Heatree Activity Centre

## First, Second and Third Floors



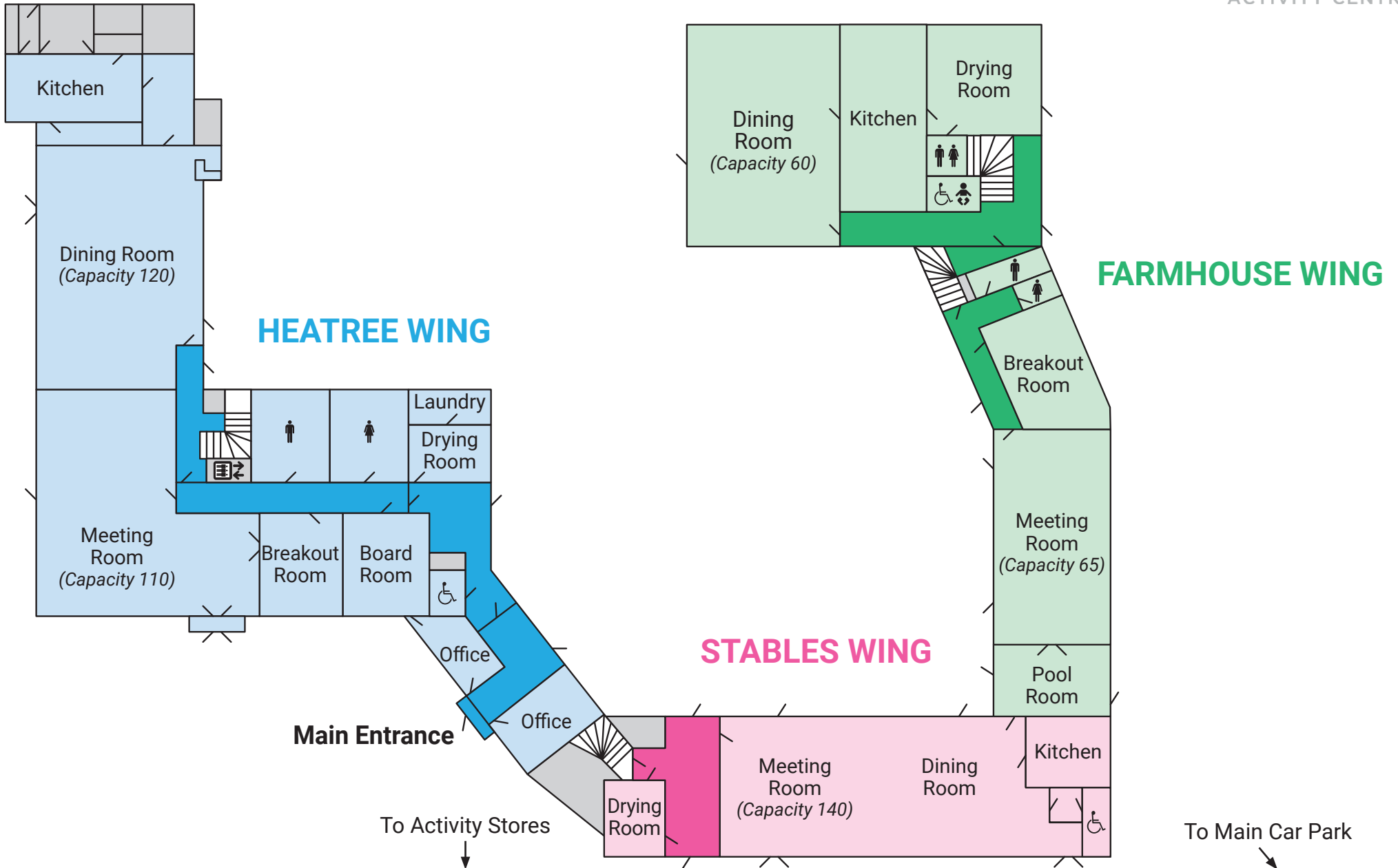
**NOTES:**

- Shaded grey columns = space for an extra fold-up bed
- Rooms 6 & 7 and 8 & 9 can be joined together
- Rooms 25 and 30 have wet rooms
- Rooms 30 and 41 have divan beds
- Rooms 38, 39, 41 share two bathrooms on third floor
- Travel cots available including mattress sheets

✘ Wing reconfiguration points (doors can be locked to close off corridors)

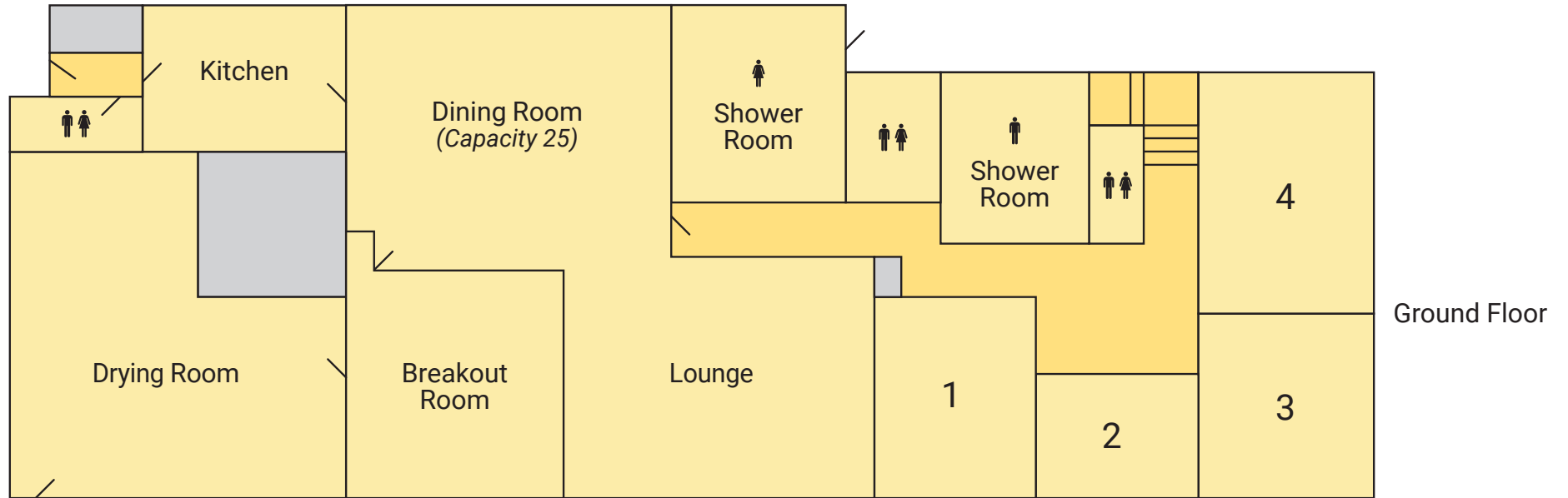
# Heatree Activity Centre

## Ground Floor

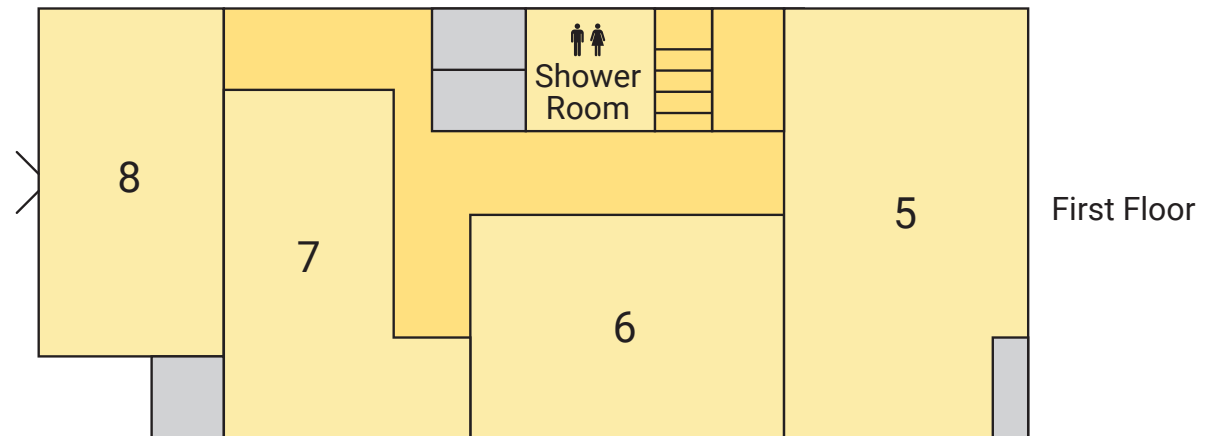


# Heatree Activity Centre

## The Way (23 beds +2)



1	3	1 bunk, 1 single
2	2	2 singles
3	2	1 bunk
4	4	2 bunks
5	5	2 bunks, 1 single
6	2	1 bunk
7	3	1 bunk, 1 single
8	2	1 bunk



### NOTES:

- Shaded grey columns = space for an extra fold-up bed
- Each bedroom has a sink basin